



## 1170(h) Sentencing Trends October 2011 through February 2013

Data source: Superior Court, Court Management System

	Oct-11	Nov-11	Dec-11	Jan-12	Feb-12	Mar-12	Apr-12	May-12	Jun-12	Jul-12	Aug-12	Sep-12	Oct-12	Nov-12	Dec-12	Jan-13	Feb-13	Total
Total Number of 1170h sentences	24	34	17	21	20	24	24	28	17	19	19	17	18	18	25	18	10	353
Number Sentenced to Jail Only	21	15	10	11	8	14	12	16	14	9	7	6	7	8	9	5	4	176
Number Sentenced to Split Sentence	3	19	7	10	12	10	12	12	3	10	12	11	11	10	16	13	6	177
% of 1170h Sentences that were Split Sentences	13%	56%	41%	48%	60%	42%	50%	43%	18%	53%	63%	65%	61%	56%	64%	72%	60%	50%
<b>1170(h)(5)(a) - Jail Only Sentences</b>																		
Low Sentence Length (in months)	16	12	6	8	16	16	8	3	8	16	16	24	16	16	12	16	16	3
High Sentence Length (in months)	36	36	48	40	36	36	36	48	36	72	36	36	36	36	49	24	44	72
Average Sentence Length (in months)	23	25	26	24	22	22	19	26	21	28	26	28	21	24	26	19	30	24
Number Whose Jail Sentence is Served with CTS*	5	3	4	2	3	3	5	7	7	3	2	2	4	3	1	3	1	58
Ave Time Served in Jail after CTS (if >0) (months)	12	14	13	14	6	14	8	13	8	8	10	10	2	1	7	4	9	9
<b>Sex of those sentenced under 1170(h)(5)(a)</b>																		
Male	17	14	10	10	6	13	12	14	13	9	6	4	7	5	8	5	3	156
Female	4	1	0	1	2	1	0	2	1	0	1	2	0	3	1	0	1	20
<b>Race of those sentenced under 1170(h)(5)(a)</b>																		
White	7	4	2	4	0	4	6	9	7	4	4	4	2	1	3	3	2	66
Black	14	11	8	4	8	9	6	6	7	5	3	1	4	6	4	1	2	99
Chinese	0	0	0	2	0	1	0	0	0	0	0	0	0	1	1	0	0	5
Unknown	0	0	0	1	0	0	0	1	0	0	0	1	1	0	0	1	0	5



## 1170(h) Sentencing Trends October 2011 through February 2013

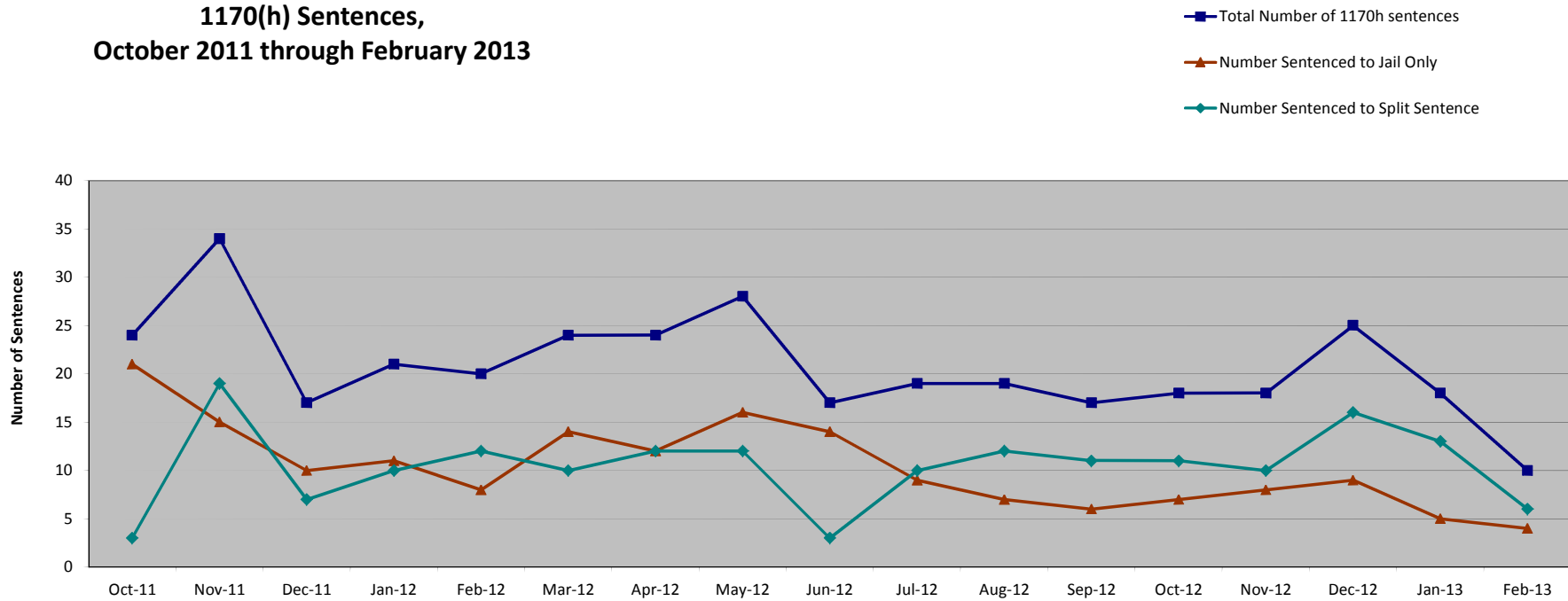
	Oct-11	Nov-11	Dec-11	Jan-12	Feb-12	Mar-12	Apr-12	May-12	Jun-12	Jul-12	Aug-12	Sep-12	Oct-12	Nov-12	Dec-12	Jan-13	Feb-13	Total
<b>1170(h)(5)(b) - Split Sentences</b>																		
<b>Jail Portion</b>																		
Low Sentence Length (in months)	12	0	8	6	6	1	0.5	1	6	2	2	5	4	8	1	2	5	0
High Sentence Length (in months)	16	36	24	55	36	12	28	48	12	36	36	17	24	30	48	36	12	55
Average Sentence Length (in months)	13	13	14	16	17	8	13	20	9	18	14	9	10	15	13	15	9	13
Number Whose Jail Sentence is Served with CTS*	0	7	3	3	3	5	4	5	0	2	4	4	6	3	4	3	2	58
Ave Time Served in Jail after CTS (if >0) (months)	7	8	7	6	11	4	9	12	4	8	7	3	3	1	2	3	4	6
<b>Mandatory Supervision Portion</b>																		
Low Sentence Length (in months)	8	1	12	6	7	11	12	10	24	12	6	4	4	8	8	6	8	1
High Sentence Length (in months)	48	78	30	60	66	47	66	36	42	24	36	54	41	36	48	60	72	78
Average Sentence Length (in months)	23	26	22	24	26	24	34	20	31	17	20	26	19	20	24	23	29	24
<b>Total Sentence Length (Jail + MS)</b>																		
Low Sentence Length (in months)	24	16	24	16	23	16	36	16	36	16	16	14	16	16	16	16	16	14
High Sentence Length (in months)	60	108	48	96	72	48	74	60	48	72	48	71	48	49	72	84	84	108
Average Sentence Length (in months)	36	38	35	39	43	32	47	39	40	35	34	36	29	35	37	38	39	37
<b>Gender of those sentenced under 1170(h)(5)(b)</b>																		
Male	3	17	7	10	11	7	11	9	2	10	10	9	8	9	14	10	6	153
Female	0	2	0	0	1	3	1	3	1	0	2	2	3	1	2	3	0	24
<b>Race of those sentenced under 1170(h)(5)(b)</b>																		
White	1	2	3	4	5	6	5	4	0	4	5	2	1	2	3	5	2	54
Black	2	15	3	5	7	4	5	8	3	6	6	9	8	7	13	8	4	113
Chinese	0	0	1	0	0	0	1	0	0	0	1	0	1	1	0	0	0	5
Unknown	0	2	0	1	0	0	1	0	0	0	0	0	1	0	0	0	0	5

\* Represents the number of people who were released after sentencing, as their jail sentence is deemed served with credits for time served pre-trial.



## 1170(h) Sentencing Trends October 2011 through February 2013

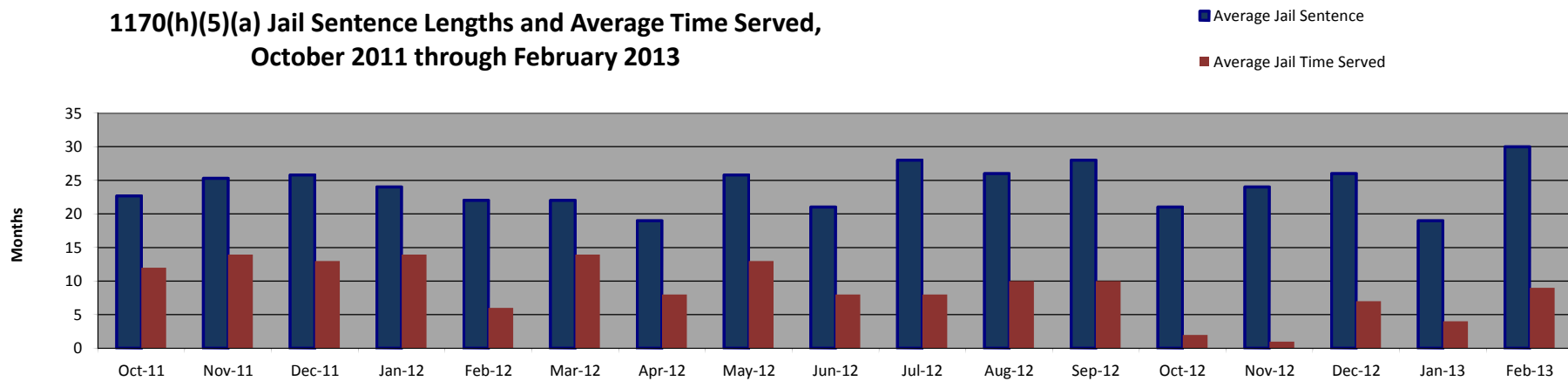
### 1170(h) Sentences, October 2011 through February 2013



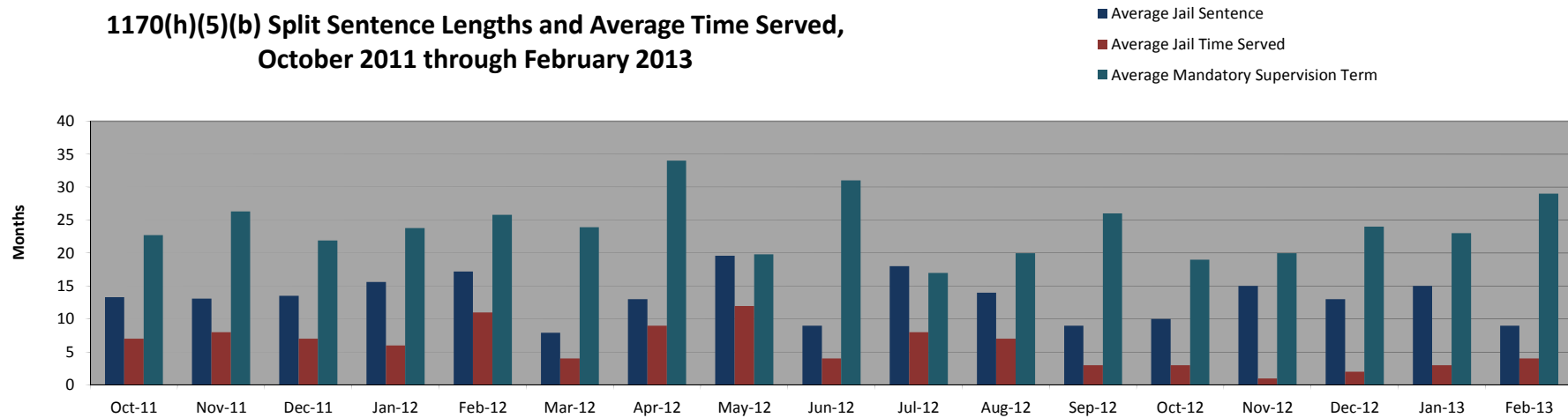


## 1170(h) Sentencing Trends October 2011 through February 2013

### 1170(h)(5)(a) Jail Sentence Lengths and Average Time Served, October 2011 through February 2013



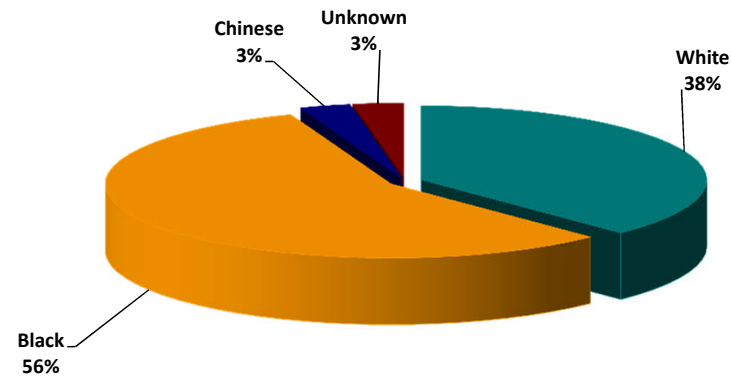
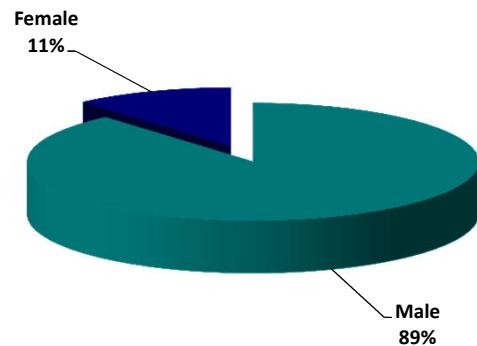
### 1170(h)(5)(b) Split Sentence Lengths and Average Time Served, October 2011 through February 2013



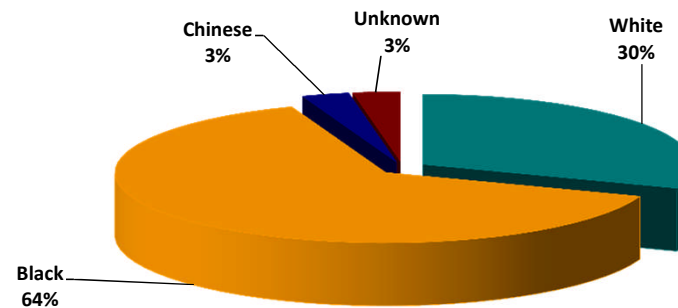
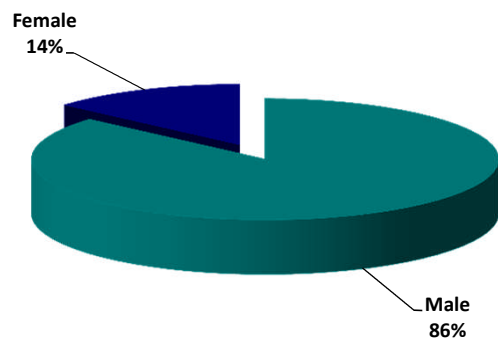


## 1170(h) Sentencing Trends October 2011 through February 2013

### Total Sentenced Under 1170(h)(5)(a) - Straight Jail, October 2011 through February 2013



### Total Sentenced Under 1170(h)(5)(b) - Split Sentence, October 2011 through February 2013



# San Francisco Local Prison Sentencing

3/1/2013

[Go to all Realignment Data](#)

[Read the Report](#)

[Choose a county with a map](#)

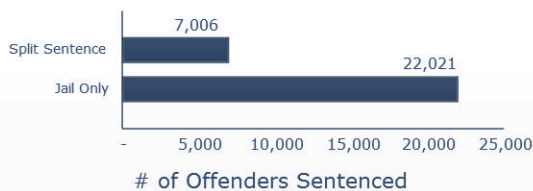
[See Definitions](#)

	Total Local Prison	Split Sentence	% Split Sentence
~Q4 2011	77	31	40.3%
~Q1 2012	65	32	49.2%
~Q2 2012	69	27	39.1%
~Q3 2012	55	33	60.0%
Total	266	123	46.2%

Symbols indicate change from previous quarter. Arrows indicate more than a 5% change from previous period

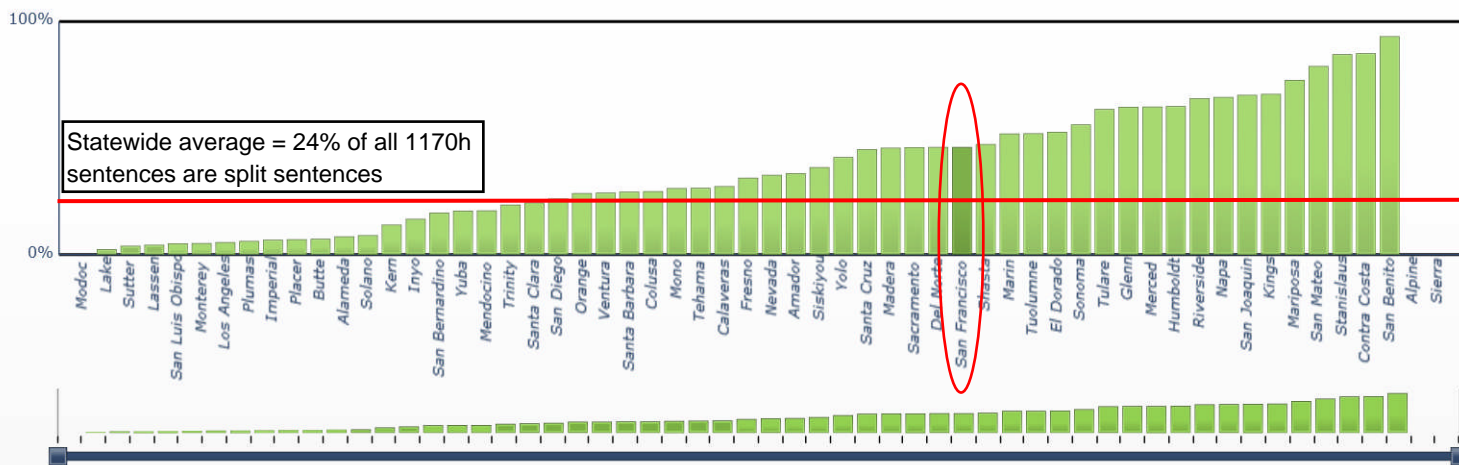
## Local Prison Offenders Sentenced

Statewide, Oct 2011 to September 2012



## Percent of Local Prison Sentences Receiving a Split Sentence

Click on a county's bar for more information. Use the slider on the bottom to see a smaller range of counties





# California Realignment Dashboard

[Show County Info](#)
[Show Definitions](#)

PRCS	Oct 2011-Mar 2012	Apr 2012-Sep 2012	Total
Releases	22,469	↓ 13,860	36,329

Local Prison (1170h)	Oct 2011-Mar 2012	Apr 2012-Sep 2012	Total
Total Sentences	14,837	↓ 14,190	29,027
~Jail Only	11,585	↓ 10,436	22,021
~Split Sentence	3,252	↑ 3,754	7,006

Click to learn more about:

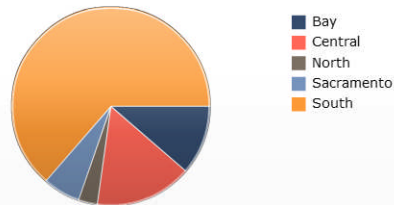
[Statewide Trends](#)
[PRCS Offenders](#)
[Local Prison](#)
[Click to See Split Sentencing Dashboard](#)

This data is current through September 30, 2012.

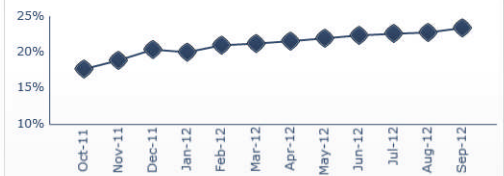
Choose a metric

Local Prison Total Sentences
1170h Sentences by Type
Monthly Local Prison Percent of Custody Only
Monthly Local Prison Percent of Split Sentences
Cumulative Local Prison Percent of Split Sentences
Active Population of Mandatory Supervision

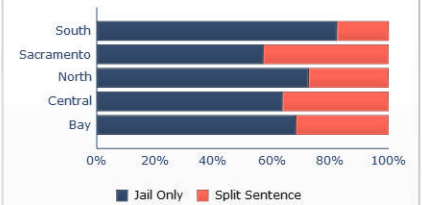
Proportion of Local Prison Offenders Sentenced, by Region  
As of September 30, 2012


[Read the Report](#)
[Go to County Dashboard](#)

Cumulative Local Prison Percent of Split Sentences  
October 2011 to September 2012



Local Prison Offender Sentence Types, by Region  
As of September 30, 2012


[Get the Raw Data](#)

# San Francisco Realignment Dashboard

[Show Definitions](#)

PRCS	Oct 2011- Mar 2012	Apr 2012- Sep 2012	Total
Releases	237	↓ 132	369

Local Prison	Oct 2011- Mar 2012	Apr 2012- Sep 2012	Total
Total Sentenced	142	↓ 124	266
~Jail Only	79	↓ 64	143
~Split Sentence	63	↓ 60	123

Arrows indicate direction of change from previous quarter. Circle indicates no change.

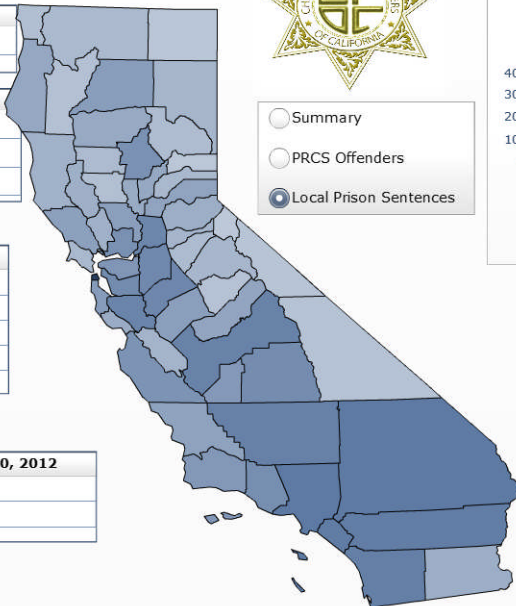
County Comparison	
Probation Region	Bay
Adult Realigned Population Size	Large
PRCS Release Rate per 100,000 adults	Below Average
Local Prison Sentencing Rate per 100,00 adults	Below Average

[Click to See Split Sentencing Dashboard](#)

Active Realigned Supervision Population As of September 30, 2012	
PRCS	348
Mandatory Supervision	80



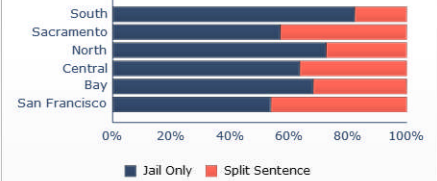
- ☐ Summary
- ☐ PRCS Offenders
- ☒ Local Prison Sentences


[Read the Report](#)
[Go to Statewide Data](#)

Monthly Local Prison Percent of Estimates  
October 2011 to September 2012



Local Prison Offender Sentence Types, by Region  
As of September 30, 2012



This data is current through September 30, 2012.

Choose a County: Darker shades have more realigned offenders.

[Get the Raw Data](#)